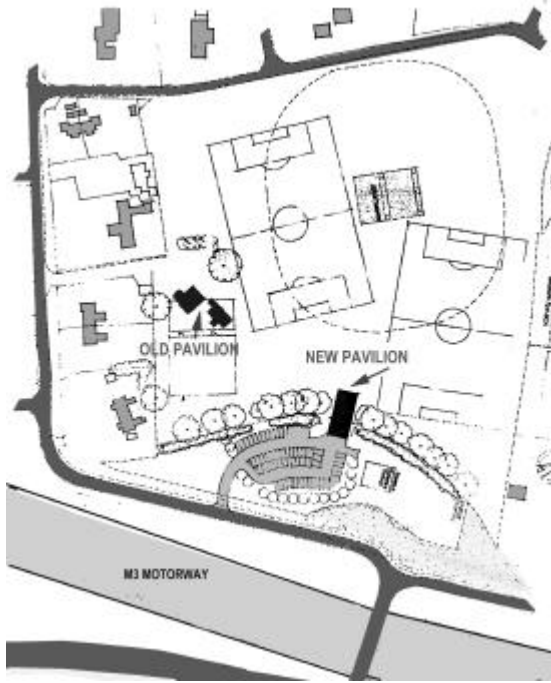


## where will it be?

On the eastern side of the field straddling the belt of trees which separate the existing field from the "return land". We placed it end-on to the field in order to keep its profile small.



Putting the pavilion here allows us to use the "return land" for the car park. This will keep cars away from people's houses and from overspilling onto the field. Over 50 cars were parked haphazardly around the field for a recent football match. The HCC planning standards require us to provide 58 parking spaces. The new tennis court will be on the site of the old pavilion.

## how will it affect my Council Tax?

**No change with the Parish Council's proposal. We already have the money.**

This pavilion has been designed to get us the best chance of grants. If we get the grants, our savings are enough for the Parish's contribution.

**If this proposal is rejected** you will be telling us that you want a smaller pavilion. That would have fewer facilities so be less likely to get grants.

The present pavilion is in such poor state it has to be replaced anyway. Without grants we would need a contribution from the Council Tax, estimated at £114 per household.

## who can use it?

The pavilion, playing field and tennis courts all have to be managed and cared for - and the Parish Council is going to license the Sports Club to do this.

The pavilion will be available to the whole community, as will the field and the new tennis court. However, the upkeep of the facilities costs money and there will be a reasonable charge for their use. You can either join the Sports Club or use them on a "pay and play" basis.

The licensing laws govern use of the bar which means that you will have to be a member of the club to use it.

---

Published by  
Compton & Shawford Parish Council  
29 Hanover Lodge  
St Cross Road  
Winchester SO23 9PQ

June 1999



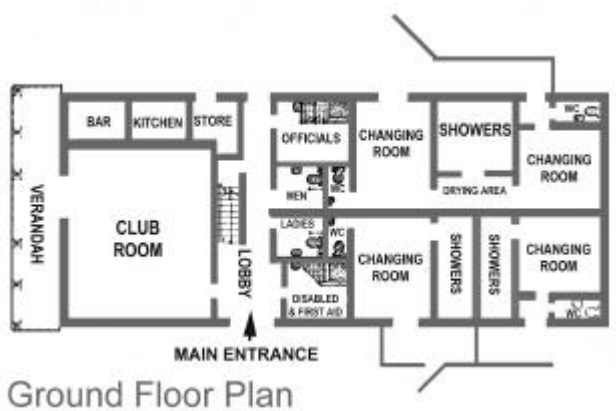
## what will it look like?

This picture shows a close up image, taken from the architect's drawings. The building is about 22ft high (most two storey houses are just under 30ft) and it's not as tall as most of the houses round the field. On its south side, we hope to gain permission for dormer windows to give a view of the tennis courts and also of the car park for added security. At the rear, we will cut away some of the ground that was loosely filled in during the M3 construction to provide storage under the building for the groundsman's equipment. This will not be visible from most angles.



## what's inside?

Downstairs, changing rooms including facilities for women, disabled and referees,



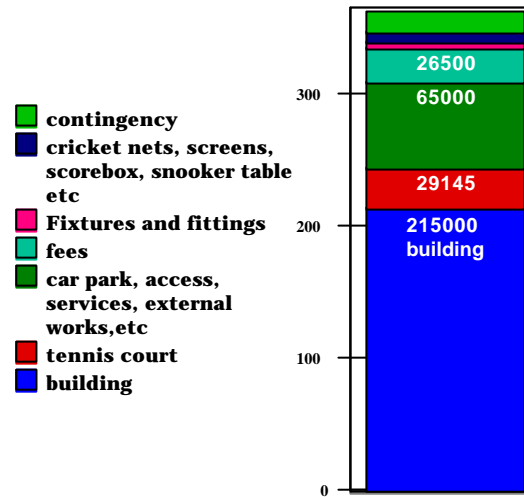
and a bar. Upstairs, in the roof space, a table tennis/tea room with a balcony overlooking the field, and a room for the snooker table that was donated

The dimensions and details of the pavilion in the pictures are taken, with permission, from scanned images of the architect's drawings.

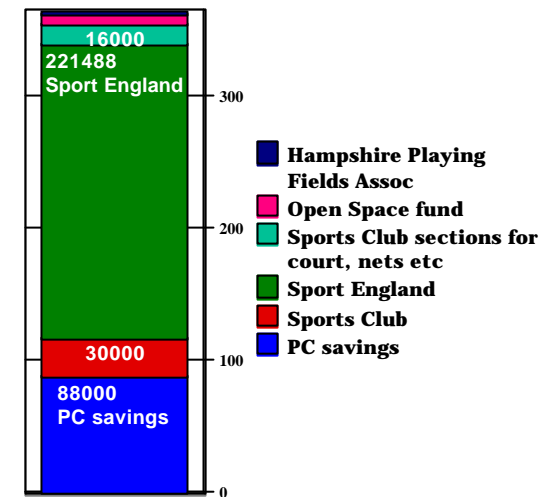
## how much will it cost?

This chart shows on the left how the total project cost of £365,000 is made up and on the right how the project will be funded.

Breakdown of £365,000 costs



Where's the money coming from?



## could we make it smaller?

Using the pitched roof space for recreational snooker and table tennis strengthens our case for a grant because those sports are recognised for funding by Sport England (the new name for the Sports Council).

Without the rooms in the roof space we still could not lower the height of the building because the tiles agreed with the planners need a roof slope of 40 degrees.

If we go for a smaller pavilion and lose out on Sport England grants, the bottom line for a total project of £195,000 would be a shortfall of £63,500 or about £114 per household.

Funding a smaller pavilion

