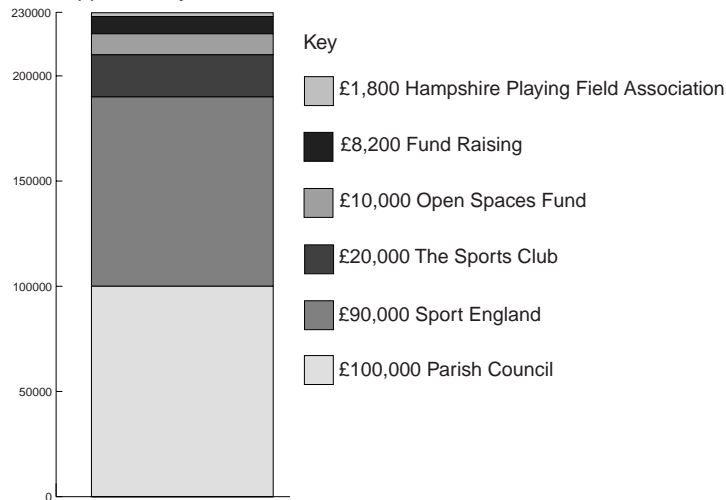


HOW WILL IT BE FUNDED?

The Parish Council has already saved £100,000 over the last 18 years towards this project and we have confirmed grants available of £10,000 from the Winchester City Council Open Spaces Fund and £1,800 from the Hampshire Playing Fields Association. The Sports Club is going to contribute £20,000 themselves and we plan to fundraise £8,200 ourselves. This leaves a shortfall of £90,000. It has been decided to seek Sport England funding for this £90,000. This decision has been approved by the Parish Council



TIMETABLE

The Sport England bid is in two stages with a final decision being given in the Autumn of this year. If successful, we must then get planning permission, followed by the tendering process. Construction will start in late Spring 2002 with completion in Autumn 2002.

SPORT ENGLAND BID

A lot of work has gone into preparing the Sport England bid. We have liaised with the local authority and with the governing bodies for the sports involved. We have now submitted the bid and are awaiting their decision.

FUNDRAISING

As mentioned earlier, we are planning to fundraise the sum of £8,200 ourselves. In March we held a Horseracing night in the Village Hall which raised £1,359. We are left with an amount of about £7,000 to raise.

We are sure that there are many people locally who would like to contribute to this worthwhile local project. Donations of any amount would be most welcome and should be made payable to: Compton and Shawford Pavilion Building Committee and sent to the Treasurer, Anthony Lewis, Grove Road, Shawford, Winchester, Hants, SO21 2DD

We are seeking a number of larger donations of £100 or more that will be discreetly acknowledged in the new pavilion. We would like to similarly recognise a number of Benefactors who donate £250 or more. We also plan to hold an Auction of Pledges in the Village Hall. This will call on the generosity of people or companies to donate goods or services that can then be auctioned off to raise money. Such pledges may vary from the offer to babysit to a day out on someone's boat.

This should complete our fundraising programme.

FEEDBACK

Any comments about the above can be raised at the Annual Parish Meeting on 27th April or discussed with Paul Murray Chairman of the Pavilion Building Committee. New Barn Farm, Shepherds Lane, Compton, Winchester, SO21 2AD

A NEW PAVILION For COMPTON & SHAWFORD NEWS UPDATE

Memorial Playing Fields,
Shepherds Lane, Compton Down
Winchester, Hampshire



PAVILION NEWS UPDATE

The mandate given to the Pavilion Building Committee by the Parish Council was to build “a long lasting building, of attractive design, such as a block built timber clad building, on the eastern boundary of the field with the car park on the return land, subject to major decisions which will be made by the Parish Council.”

That was the starting point for this new initiative on the pavilion and represented a broad consensus of the known feelings within the community.

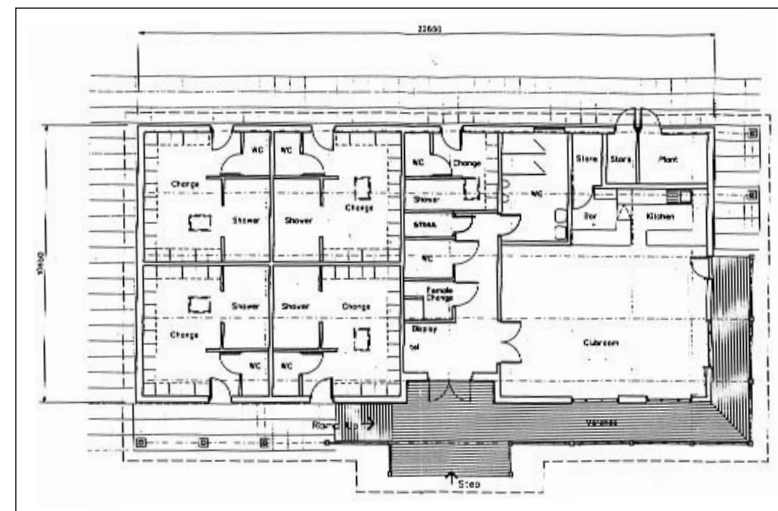
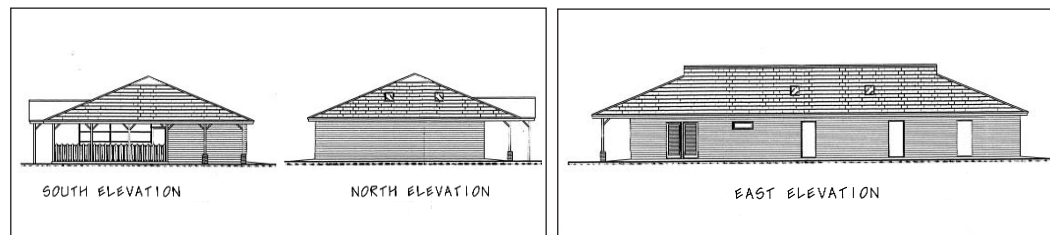
The Pavilion Building Committee is chaired by Paul Murray, ably assisted by the following committee members:

- | | |
|--|--------------------------------|
| Anthony Lewis - Treasurer | Councillor Martin Bell |
| Jo Lockett - Secretary | Councillor Nick Campbell-White |
| Lyn Brace - Fund Raising Chairman | Ian Gray |
| Martin Dearlove - Sports Club Chairman | John Evans |
| Councillor Adrian Walmsley | Brian Marchmont |

With the permission of the Parish Council, a Project Manager was appointed to prepare a preliminary scheme design for the new pavilion and to prepare a budget cost plan. The project manager is Mr Bill Everton of Gentle Associates, Botley. His charge for this preparatory work was £750.

The proposed design is a medium sized (242 sq.m) single storey pavilion, being block built with a timber cladding and a tiled roof. The accommodation consists of four changing rooms, an officials changing room, a clubroom with a bar and kitchen, as well as toilet facilities and storerooms. It is proposed that the equipment store and groundsman’s hut is housed in a separate structure.

PLANS



FLOOR PLAN



SITE PLAN

