
Compton & Shawford Parish Council

Annual Review

April 2006

Chairman's Report

A year ago, we were just starting a campaign for a sensible management plan for Shawford Down. Now, thanks to the support of the County Council's Countryside Service, the Down is in much better shape. We are hoping that before too long we will see the Down being grazed by highland cattle keeping the shrub in check in the most eco-friendly way.

Last year, we were also worried about the proposed 17 dwelling development at Longacre which was stalled for traffic reasons. Recently, the developer obtained permission for an alternative plan: modifications to the existing building with one single additional dwelling. We continue to monitor this situation, which is changing as I write.

The proposed Park and Ride is an issue which we will need to confront in the near future: George Beckett's piece on the next page sums up the current position.

All these developments raise questions of how we would like to see our village evolve and how best we can influence the planning process.

A couple of years ago, our Parish Council adopted a formal planning policy. Using it, we have been able to take a consistent approach to planning applications .

We think the time has come to take the next step: to prepare a Parish Plan document. If adopted, the planning authorities will have to take it into account when making decisions.

A Parish Plan is however very much more than a planning document.

Parish Plan

A Parish Plan should be created by a wide range of volunteers with the support and encouragement of the Parish Council. It involves asking everyone in the parish what kind of community they would like to live and work in, and what changes they would like to see. The Plan can be very useful as evidence when seeking grants or action from outside bodies.

We have already started laying the groundwork for a Parish Plan project. We had a good meeting with the chairs of the various Residents' Associations in January. We applied for and obtained a grant from Defra. I'm very pleased that CASCA have promised support and Peter Betts has offered to lead the project.

Another Hampshire village, St Mary Bourne , a similar size to us, recently completed a Parish Plan. They identified a whole host of initiatives through their



Parish Plan project. I'm delighted that Michael Widén, a Parish Councillor at St Mary Bourne who was heavily involved in their project, has agreed to tell us about it at our Annual Parish Assembly on 26 April.

I'd like to thank our clerk and my fellow councillors, especially those who recently joined the council, for their support during the past year, .

It's always good to have new ideas on the Parish Council and it would be great to have more people willing to get involved. Why not start thinking now about whether you'd like to come forward for election in 2008?

and finally..

what a pleasure it was to be able to host such a well-attended reception in honour of our Commonwealth Silver Medallist, Julia Beckett, seen above with her family.

With best wishes

Adrian Walmsley

View from the City Council

The most significant current item of business between the Parish and City Council is the planning stage of the proposed southern Park and Ride site. Although this facility is provided by the County Council, the City Council will operate it, and are closely involved with the proposals. Although it is agreed by many that a Park and Ride facility near junction 11 of the M3 is desirable, the site being promoted is not the least damaging to the amenity of our community, and there is an alternative. We are pressing for the Tarmac site to be fully evaluated.

There has without doubt been success in getting W.C.C.

planners to see the Parish point of view in some instances, but much more remains to be done, and a pragmatic but firm view on over dense or out of character proposals is consistently put in representations.

There has been much talking but little progress in the matter of aircraft noise. My City Council colleague, Cllr Murray MacMillan, has attended all consultations and is ensuring that the Parish view is put at every opportunity.

This coming year will see the roll-out of waste collections alternating between recyclables and other waste. Some areas of

the Parish have been involved with the pilot project, not completely without difficulties, but satisfactory in general. This method has proved most effective in increasing recycling to government imposed targets. I am available to assist in dealing with council officers should the new scheme create problems.

I enjoy a good working relationship with the Parish Council, and would like to thank the Chairman and members for their assistance with my duties in the last year.

*Cllr George Beckett,
Member, Compton and
Otterbourne ward.*

This committee has dealt with a varied number of issues since the last Parish Meeting; overhanging hedges, white lines, graffiti, dog fouling signs, the notorious 'pink tubes', and the major issues of Shawford Down, the Victorian Memorial, and the Annual Spring Clean.

Shawford Down

We have arranged for the grass to be cut around the War Memorial and the Wayside Cross, twice during the summer, and prior to the Remembrance Sunday, independently of the Countryside Agency. The Agency has cleared the area fronting onto the main road from the Wayside Cross, at our request, and this is now visible again from the road, as in the past. We have also been in constant communication with them regarding the deterioration of the Downs. As you will all have seen, there is good news. They have applied for a grant

Highways and Byways

from Defra, and, in the meantime commenced clearance, organised by the knowledgeable rangers. They have assured the Parish Council that the views expressed by residents, which were collated and sent to them, will be valued.

Victorian Memorial

There is good news too, regarding the Victoria Jubilee Drinking Fountain opposite the station. A survey has been done, and a landscaping plan is in the pipeline - to enable us to apply

for a grant for any work that is carried out. We have accepted a quote from a local company to refurbish the Memorial.

Spring Clean

It was decided this year to enlarge the Annual Spring Clean to a week, instead of on one Sunday. My thanks to all of you who collected rubbish and brought it to the Parish Hall or disposed of it via your own bins.

Highways Department

Finally, I would like to mention the help and co-operation that I have received from all the officials from the City Council, but especial mention must be made of the Highways Dept, who are always helpful, efficient and speedy in their response to requests for assistance.

*Tricia Caffyn
Convenor*



Enjoying the newly-cut Down

What is a Parish Plan and why do we want one?

This is what St Mary Bourne said:

PARISH PLAN

In November 2000 the Government's Rural White Paper *Our Countryside - The Future* launched the concept of the Parish and Town Plans whose purpose is to:

"... set out a vision of what is important, how new development can best be fitted in, the design and quality standards it should meet, how to preserve valued local features and to map out the facilities which the community needs to safeguard for the future."

Plans should "identify key facilities and services, set out the problems that need to be tackled and demonstrate how distinctive character and features can be preserved."

Parish Plans should set out a vision for how the community wants to develop in the future, and identify the action needed to achieve it.

They can include everything that is relevant to the people who live and work in the

community, from employment and playgrounds to the design of new buildings and protection of hedges and ponds. They can include any social, environmental or economic issues.

It is up to the community to decide what is important for them.

Parish Plans, including Village Design Statements, have the potential to influence a wide range of organisations and processes which affect the lives of rural communities.

They should complement and help deliver local planning policies and frameworks but they cannot override adopted planning policy.

They should influence local housing and land management strategies. They should also contribute to the way local services are managed and delivered.

Why create a Parish Plan?

Our Parish Plan provides us with:

- A way to influence decisions by local authorities and other service providers
- A basis for planned action by people in the parish
- A possible route for winning funds for local initiatives and activities
- A framework to help the Parish Council decide what their community needs them to focus on
- A way in which everyone can be involved in taking action to ensure that the parish thrives and develops in the way they want it to

In short it is your say in how we develop as a community.

Parish Council Powers

The 1997 Local Government & Rating Act gave Parish Councils powers to organise or contribute to car pooling schemes, local transport, traffic calming and crime enforcement. Currently we cannot reclaim money from the City or County Councils when we organise such schemes for ourselves rather

than asking them to do it.

The full list of council powers is summarised on the Parish Council web site. It covers playing fields, lighting, villages halls as well as historic powers such as provision of public wash houses.

This is over and above the powers granted under Section 137 of the 1972 Local

Government Act which allowed a local council to spend in any one financial year up to £3.50 (raised to £5.30 for 2005/6) per elector on anything for which it has no express power, provided that the expenditure is for the direct benefit of the parish, or some or all of its inhabitants.



Playing Fields

The new slide which was added to the Compton Street playground has been a great success, used by the Playgroup and local children.

All the playground equipment is regularly checked and given an annual inspection. We are pleased to see that great care has been taken of the new goal posts and nets. The football pitch has been very popular.

Cricket nets were installed at the Memorial Playing Field last year using money from the Open Space fund. The cricket club use them and they are also open to use by anyone.

The third tennis court was completed last year; its surroundings are now being landscaped.

The pavilion car park has been resurfaced and we have provided extra car parking spaces.

We plan to clear and seed the area north of the machine shed.

We are very fortunate in having Jim Kimber as our groundsman, who keeps the fields under control on a fortnightly basis.

The southern part of the Memorial Playing field has become very uneven, affecting both football and cricket, and will need remedial work.

Mary Shaw
Playing Fields Committee Convenor



CASCA, which is responsible to the Parish Council for the management of the Shawford Parish Hall, can report another successful year for the hall.

We have let the hall to 96 organisations and individuals over the last year. These cover a wide range of activities for residents of the parish and for the wider community. Parish hirings account for about 20% of the total.

A very important aspect of the Hall is its long term funding to minimise the cost to local rate payers, therefore surplus funds are allocated to the long term funding needs as well as the annual needs of routine maintenance. We continue to update the fittings to provide the users with the best facilities.

In order to ascertain the long term needs of the funding requirements, the Hall will be professionally surveyed this year.

Another significant issue for the Committee has been the need to correctly license the Hall for the consumption and sale of alcohol as a result of changes to the licensing procedures. We have now obtained this clarification from Winchester City Council

who is the licensing authority.

We can now accommodate the current and projected level of alcohol sales by the process of Temporary Event Notices (TENs). It will be up to the hirer to apply for these "TENs" at the time of booking allowing at least six weeks for the application to progress.

We do not envisage that the sale of alcohol at the hall will increase but the use of the "TENs" will enable us to comply with the licensing laws.

Further details can be obtained from Frank Smith our caretaker about the use of the Hall (712944).

John Griffith
CASCA Chairman

Do you take the Parish Magazine?

It's your best source of information about events run by local clubs, societies, the church and the Parish Council.

Contact Barry Nicholson on 712201 to arrange a subscription (£6 a year).

Congratulations

To Ben Farrar, National Under 18 Close Up Magic Champion for 2005

To Julia Beckett for her Commonwealth Silver

Compton Centenary Appeal

It is thought of as: Compton Parish Church and Community Development Scheme:

The Church and wider community are working together to fill identified gaps in provision of local facilities. The scheme will aim to improve the general capacity of the church to serve as a community building at times when services are not being held. It will also provide a multi-purpose complex of rooms with the following aims:

- A drop-in centre for all local people with particular concern for the socially excluded
- An office providing information, advice and guidance with particular concern for the elderly and those experiencing difficulties with local provision, form filling, etc.
- A village post office (part time)
- A small meeting room within walking distance for the Compton Street / Martins



- Fields / Attwoods Drove areas
- A room which can be used by the school for occasional use one-to-one or with small groups of pupils with special educational needs (including gifted children)
- An appropriate room for pastoral support of those in need of counselling or advice

It is anticipated that this complex will be staffed by trained (professional) staff and volunteers from the community and will be used by local voluntary and statutory support agencies as well as ministers from

local churches. It will be offered as a local centre to local medical practices.

The total cost of the project will be in the region of £400,000

The Compton Centenary Appeal has now been running for approximately fifteen months.

During that time, a wide range of events has been organised. These events have involved a broad spectrum of people from the village and, at the same time, brought in money

from outside the benefice.

The activities have included: A 60s/70s theme dance; a Gala Charity Auction; a Treasure Hunt; a Tennis Tournament; a Golf Day; a Barn Dance; a Flowers and Gardens Festival; a Family Fun Run; a concert in All Saints' Church by the Winchester Girls Choir; a Quiz Night; a Silent Auction; the Armchair Travel Club Series; a Choral Gala at All Saints; the production and sale of Appeal Christmas Cards; a concert by the Quiristers at Winchester College; and a Murder Mystery Evening (left: couple of suspicious characters).

Events in prospect in 2006 (for which dates have already been set) include: a Tennis Tournament; a Golf Day; a Village Cricket Match under original rules; and a concert at Cranbury. A number of other events are in the planning phases.

To date over £32,000 has been raised. In addition, the events have been very much enjoyed by the participants and have kept up the profile of the Appeal.

*Dr. Martin Harris, Secretary
Compton Centenary Appeal*

The church's thinking on its centenary project has many natural linkages with our Parish Plan

Thanks to the efforts of various official bodies, such as the Department of the Environment which looks after the Itchen Navigation, the past year has been reasonably hassle-free.

The footpaths have been rather muddy recently, but that is quite normal for rural walks in winter. If there are problems the Hampshire Kremlin's footpath Guru Peter Watson (846014) seems minded to listen sym-

TREES AND FOOTPATHS

Being Tom Threlfall's report for the 2006 Compton & Shawford Parish Council Annual Parish Meeting

pathetically to any grumbles which may be directed his way, or one can try the DOE's incident team on 0800 807060.

That team cleared up very tidily the big tree which fell across the Navigation early in March, blocking the towpath

for a few days.

There is nothing fresh in the Tourism file, which also seems to be in my portfolio. One of the more significant local attractions for tourists is the Bridge Hotel, located very handily for me to sample its attractions from time to time. I hope to see you there after the Parish Meeting.

*Tom Threlfall, Hollowforth
Bridge Lane, tel. 712608.*

Planning

Planning continues to be one of the more contentious and active areas affecting our Parish.

During the last year, the vast majority (75%) of planning applications in the Parish were for extensions to existing properties or for single property infill development; nearly all were permitted. The Parish Council policy is that modest developments of this nature which reflect and preserve the character of the area are acceptable.

The Parish Council has focused most of its attention on applications for multiple property infill (8%), with mixed success (see box)

The one commercial application this year was the proposal to develop the "Walcon Site" in the Old Goods Yard adjacent to Shawford Railway Station. Based on the existing planning condi-



Work under way at Longacre

tions, the activities that can be undertaken on this site are quite restricted and resulted in the previous tenant having to vacate the site. The owners are keen to find an acceptable alternative use for the site and submitted plans for a secure containerised storage facility and redevelopment of the existing light industrial unit with two new light industrial units on the site. Permission has

now been granted. We are pleased that conditions have been imposed which reflect the existing limitations on the use of this site, and our concerns about the hours of permitted operation, the height of the containers and impact of any security lighting on the surrounding area and the highway safety aspects of the increased traffic using the site.

Other Planning Matters:

Local Plan Review -
Replacement for Policy H3 (Residential development on infill sites or development frontage policy). Following the Inspector's Report on the Local Plan Review, representatives of the Parish Council have attended

Longacre, Hurdle Way

17 residential dwellings

Despite a concerted campaign by local residents and the Parish Council, this scheme was ultimately only prevented by the poor visibility at the junction of Hurdle Way with the main road. The developer has now obtained permission for a single additional dwelling on the site and enhancements to the existing building including dormer windows a front extension and rooms above the garage.

Overcombe & Rothiemurchus, St Cross Road

2 blocks of flats (9 dwellings per block) and 17 residential dwellings

The application was refused as an over intensive and undesirable form of development on a prominent site, out of keeping with the character and detrimental to the visual amenity of the area.

Highdown, Cliff Way

4 new residential dwellings

Decision to refuse planning permission upheld on appeal to Planning Inspector. Highway safety in relation to the Shepherds Lane access junction to the site and the

increased traffic volume generated from this and other unimplemented planning permissions for development in the Compton Down area cited as reasons. However, a previous application for a pair of semi detached dwellings on this site was allowed by the appeal inspector and development under this application now appears to be proceeding.

Martin's Close, Compton Street

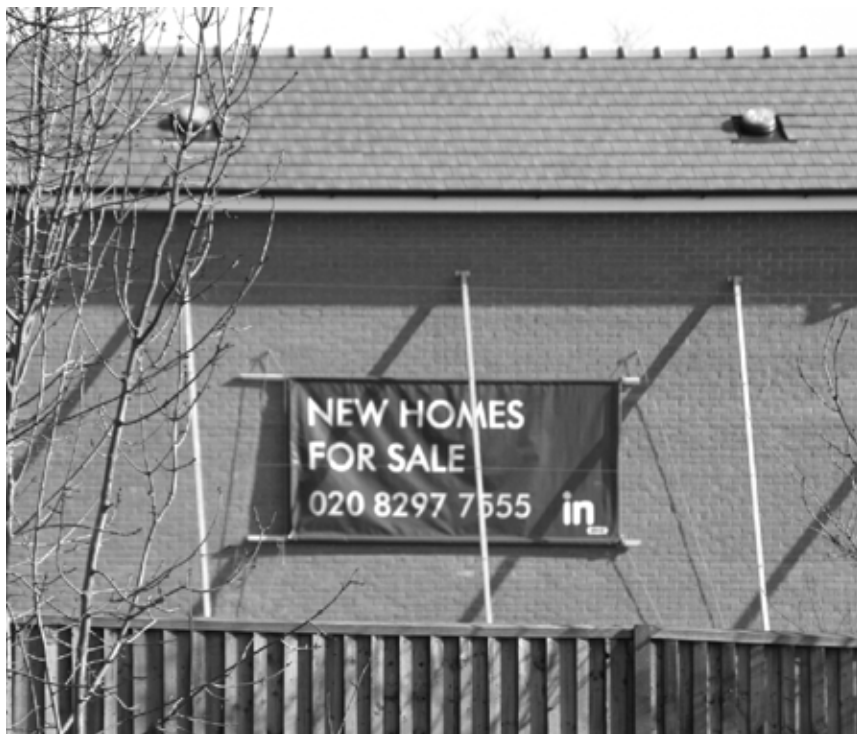
Demolition of existing house and replacement with 4 residential dwellings

The application was refused, although an earlier permission for three dwellings on the site is still extant.

Merries & Ballakitch, Highways Road

1 block of flats (16 dwellings) and 8 residential dwellings

The application was permitted. In granting this permission, Winchester City Council noted that the decision to refuse the similar development at Tilden Road had been overturned on appeal with costs being awarded against the Council. Whilst sympathetic to the concerns expressed in objections, the Council were not prepared to accept the same risk again.



**The blank wall of the Tilden Road Mountain
Ash development which reflects noise
into Shepherds Down school**

and participated in the consultation process with Winchester City Council to implement the Inspectors recommendation for replacing the proposed development frontage policy with a "criteria based" policy. This original development frontage policy principally affected only Compton Street but the scope of the new policy has been widened to include Compton Down, Shawford and Southdown. The proposed criteria, all of which must be satisfied, relate to:

1 The development forming part of a sustainable pattern of development (specific facilities or reasonable and safe access to such facilities - 1 criteria to be satisfied by one or more of 4 options);

2 The nature of the site to which the development proposal relates (3 criteria);

3 The impact of the development proposal on the rural character and appearance of the area and the village or settlement to which it relates (3 criteria).

The draft Supplementary

Planning Document issued for public consultation specifically notes that in depth development may be allowed but that many settlements in the countryside consist of frontage development and that in depth development is unlikely to reflect their character. The concept of sustainability and character are key factors in applying these criteria to future development proposals

Parish Plan & Village Design Statement as Supplementary Planning Guidance - The proposals to produce a Parish Plan and Village Design Statement are covered elsewhere in the Annual Review. However, it is worth noting that these documents, whilst having a broader ambit than simply planning issues, can be adopted as Supplementary Planning Documents and therefore can have an impact on planning decisions. For example, in the replacement H3 policy noted above, the details of the criteria to be satisfied refer specifically to both documents (where they exist) as a means of demonstrat-

ing whether or not a particular criterion has been satisfied. The Parish Plan also represents an opportunity for the Parish to establish both the facilities that are available within the Parish and the character and appearance of the Parish. They may therefore become key documents that can be used in the future to support arguments for determining the sustainability of development proposals and ensuring that any development proposals that are permitted preserve the character and appearance of the Parish or are otherwise in accordance with the wishes of its residents.

South Winchester Park & Ride

- And finally, the Parish Council is engaging in the "public consultation" process being conducted by Hampshire County Council for their plans, in conjunction with Winchester City Council, to site the proposed South Winchester Park & Ride Scheme on Bushfield Farm. The Parish Council accepts that this scheme, identified in the current Local Plan for the Bushfield Camp site, is likely to proceed. However, given that all potential suitable sites are in the "Strategic Gap" identified in the Local Plan and separating the city and the Parish, we are concerned that all alternative sites should be properly evaluated. We are therefore seeking to ensure that the results of this evaluation can be reviewed and considered as part of the consultation process to ensure that the impact of this development on the Parish is minimised.

Information: Details of all planning application on properties in the Parish are available online through the Winchester City Council "PublicAccess" Website. Go to <http://www.winchester.gov.uk> and click on "Planning" to access this site.

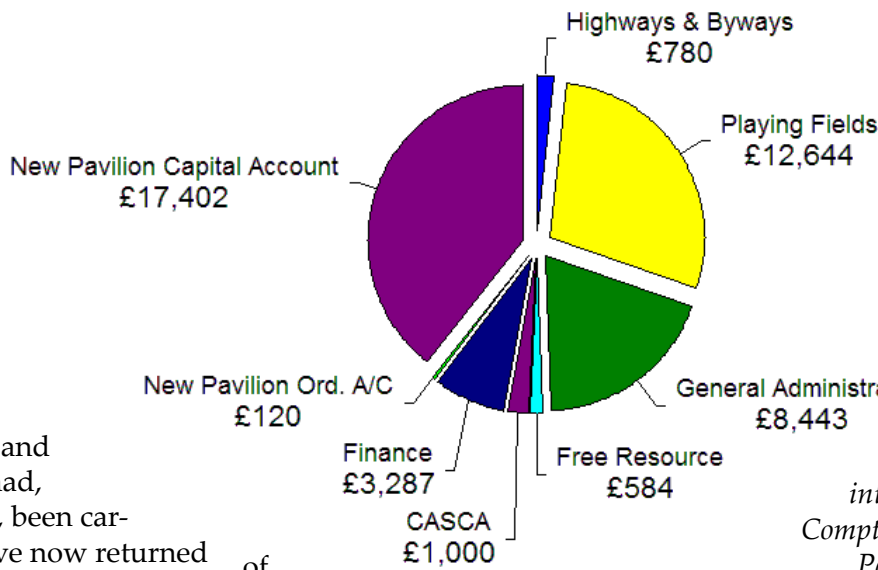
*Jeremy Dolphin
Vice Chairman and
Planning Convenor*

Finance and Admin Committee

In the last Annual Review much of the report was taken up with the New Pavilion Project. We finally paid the builder once all the snagging and remedial work had, painfully slowly, been carried out. We have now returned to normal with Finance and Admin and will run the Parish in 2006/7 on a very small annual precept of just under £25,000. Regrettably almost half of this goes on overheads, administration, insurance, the Clerk's salary and audit costs. The expenditure pie chart shows the effect of one-off capital expenses for the field and pavilion.

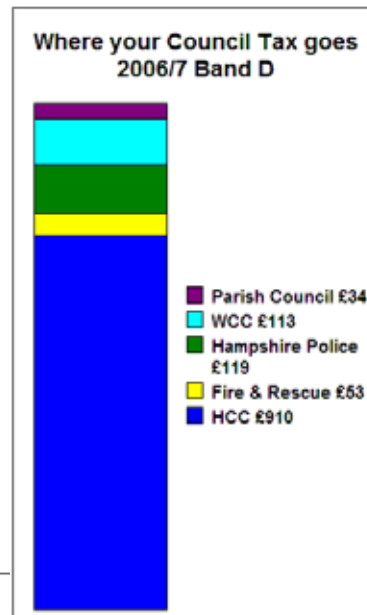
We are still over regulated by the current government. Since the last report we have been obliged to put in place a full set

Parish Council Expenditure 2005/6



of financial regulations governing all aspects of running a Town or Parish Council, an Annual Risk Assessment and a Disaster Recovery Plan.

Linked with this we changed our



internal auditor to a sole practitioner living in Fair Oak, who in his first audit was much more thorough than the previous auditor and who has prepared an "Audit Report and Risk Assessment on the Financial Systems internal control of Compton and Shawford Parish Council".

This is a "living" document which will be updated each year during the audit process.

We are now wrestling with the government's "voluntary" process for registering all the Assets of the Parish with the Land Registry. The costs are supposed to be minimal, but on investigation this does not seem to be the case.

As previously, I would like to pay tribute to all the time and effort which Mike Langford puts into administering all aspects of the Parish's business. We just could not operate as efficiently as we do without his considerable computing and financial skills.

Nick Campbell-White

